

# INSTALLATION MANUAL FOR

VOLKSWAGEN - JETTA - 1999.5-2005

VOLKSWAGEN - GOLF - 1999.5-2006

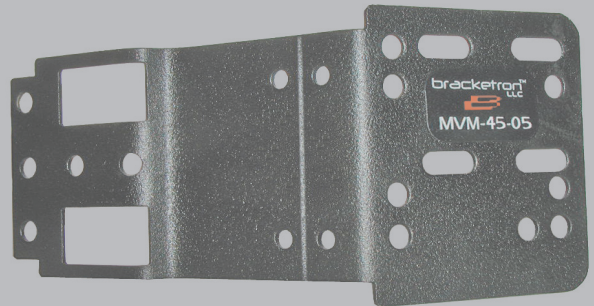
VOLKSWAGEN - GTI - 1999.5-2005.5

**Mount Location:** To the right of the radio

## MVM Multi Vehicle Mount

**MVM-45-05**

Includes PHS-203 Ultra Slim Swivel



Thank you for purchasing your new Bracketron **MVM** Multi Vehicle Mount.

The Multi Vehicle Mount is an (end user-installer) modifiable professional mounting bracket for most all mobile electronics requiring a steady and secure installation in a motor vehicle. The MVM installs behind your vehicles dash panel using existing or non-visible holes and is designed to cleanly protrude out from your vehicle's dash panel.

Before installing, you must take the time to read and understand this installation manual and read all the warnings accompanying this product.

**Instructions Include:** tools needed for install, directions for dash panel removal, directions for modifying the MVM if required.

You can download this manual and any updates from  
<http://www.bracketron.com/downloads>

## IMPORTANT INFORMATION

### IMPORTANT INFORMATION

Please read instructions completely before installing this Bracketron MVM Mount. All instructions are written from the drivers seat vantage point looking forward at the vehicles dash. We advise caution whenever you are removing or handling plastic parts of a vehicles dash. **WARNING:** Unnecessary force or pressure can cause pieces to crack or break.

**PARTS INCLUDED:** MVM-45-05 Mount, 3 - #8x3/4" Self Tapping Screws, 2 - M4x8 Phillips Pan Head Screws, 2 - M4 Nylon Stop Nuts, PHS-203 Ultra Slim Swivel and Mounting Hardware.

### TOOLS NEEDED FOR DASH PANEL DISASSEMBLY

Dash Trim Tool (Part #SIT-104)  
# 2 Phillips Screwdriver  
T-20 Torx bit and Driver  
9/32" Open End Wrench (for swivel)  
Marking Pen

### TOOLS NEEDED FOR MVM MODIFICATION (if required)

4 inch Mounted Bench Vise  
12 oz. Ball Pein Hammer  
Standard Tin Snips  
Standard Hacksaw  
Small File

**Note:** The hole pattern on the face of the MVM maybe different then what is shown in the pictures.

## DASH DISASSEMBLY INSTRUCTION



- 1 Start by removing the three (3) T-20 Torx screws toward the bottom of the glove box. Open the glove box and locate and remove three (3) more screws toward the top. Set the screws aside. Insert the Dash Trim tool (part #SIT-104) in between the radio bezel where it meets the dash molding on the right side releasing two (2) clips. Open the molding up enough to get to the exposed T-20 Torx screw.



- 2 Skip to **Step 6** on the following page if you have not yet formed the bracket to fit your vehicle.
- 3 Remove the exposed T-20 Torx screw. Place the MVM over the hole and replace the T-20 Torx screw. Tighten down the MVM.
- 4 Carefully reinstall the dash in reverse order securing all screws and clips to the bezel. Attach the face of the MVM to the section that is protruding out from the dash. Align the holes and attach the two pieces with the provided M4x8 Phillips Pan Head Screws and M4 nylon Locking Nuts. Use the #2 Screwdriver and 9/32" open end wrench to tighten.
- 5 Install the included Ultra Slim Swivel #PHS-203 to your Multi Vehicle Mount or any other AMPs compatible device.

Your installation is complete

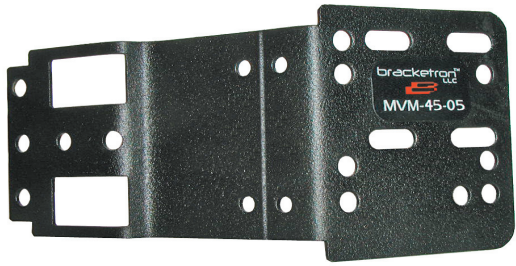


# MVM MODIFICATION INSTRUCTIONS

## PLEASE NOTE

The Bracketron MVM-45-05 mount is a modifiable mounting bracket. The illustrations on the left show how this mount should look during and after the modification steps in order to fit the listed vehicles on the front page of this manual. **Many vehicle applications may not require any modifications to the mount. If this is the case it will be noted below and there will be no steps to follow on this page.**

**Picture 1**



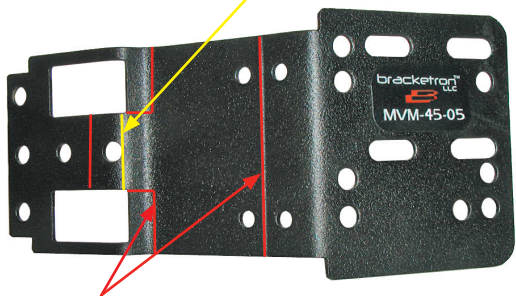
**6** Before you begin to form your MVM, please make sure it looks exactly the way it does in the top picture to the left.

**7** To begin, use a marking pen to draw the lines on the MVM as depicted in red in the middle picture to the left. **Note:** see red lines in the middle picture for guidance.

**8** Use a tin snips to cut along these lines. Then these cuts have been made completely, continue by bending along the yellow lines as depicted in the middle picture. Make this bend a 90° angle. If the the bracket gets bent use a small hammer to pound out the imperfections. If the paint chips use some paint to cover up the paint.

**Picture 2**

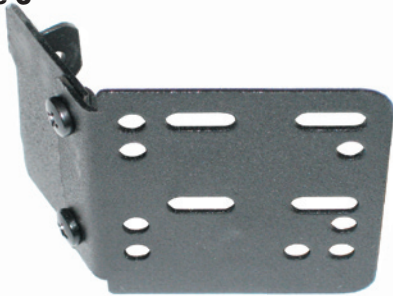
**Bend Mount Here**



**Cut Mount Here**

Now go back to **Step 3** on the previous page to finish installation.

**Picture 3**



**Note:** The hole pattern on the face of the MVM maybe different then what is shown in the pictures.

**Note:** Please see page 3 in this manual for PHS-203 Ultra Slim Swivel Instructions.

# PHS-203 ULTRA SLIM SWIVEL INSTRUCTIONS

## PLEASE READ INSTRUCTIONS COMPLETELY BEFORE INSTALLING THIS BRACKETRON MOBILE SOLUTION.

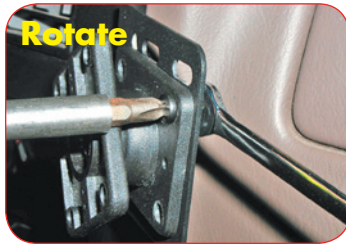
This Professional Swivel Mount Solution is designed to be mounted to your MVM or any other 4 hole AMPs compatible mounting device. The Ultra Slim Swivel is compact with a low profile and is designed to provide adjustability to devices such as Satellite Radio Receivers, GPS monitors or Mobile Phones. The Ultra Slim Swivel angles your device for better viewing, tilting approx 15° in all directions and swivels 360° degrees for maximum adjustability. All mounting hardware is included in the kit along with our AMPs adapter plate to attach devices that support T- Notch mounting.

### PARTS INCLUDED

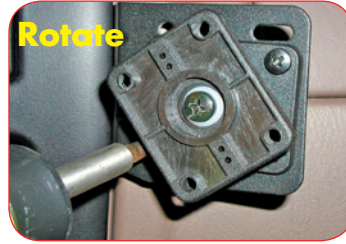
- 1 - Ultra Slim Swivel
- 1 - AMPs Adapter Plate
- 4 - M4 x 10 Hex Head Screws
- 4 - M4 x 10 Pan Head Screws
- 4 - M4 x 12 Pan Head Screws
- 4 - M4 Hex Head Nuts
- 4 - M4 Nylon Locking Nuts
- 4 - M4 Star Washers

- 1** **Note: The swivel can be installed before or after the mount is installed in the vehicle.** Attach the Ultra Slim Swivel to any MVM or CBM Mount or other AMPs mounting device by inserting the M4x10 Pan Head screws through the holes on the back half of the swivel. Align the screws up with the holes on the mount. Attach the M4 Nylon Locking Nuts only finger tight. Rotate the front half of the swivel to gain access to the M4x10 Pan Head screws. (See Picture 1&2) Tighten all 4 screws with a #2 Phillips screwdriver and 9/32" open end wrench.

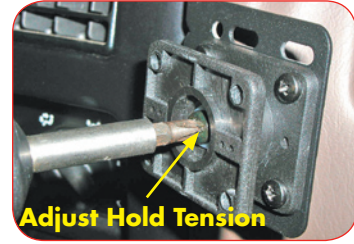
Picture 1



Picture 2

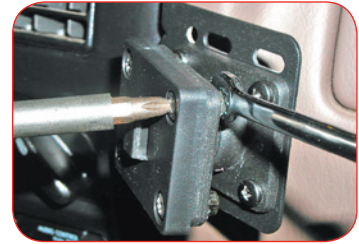


Picture 3



- 2** Tighten the center screw to adjust the desired tension of the swivel. (See Picture 3) **Note:** If Swivel becomes loose over time, you can grasp the swivel and pull toward you lightly while rotating it clockwise. This will tighten the swivel allowing you to create the desired tension needed.

Picture 4



### For T- Notch Devices

Attach the AMPs T- Notch Adapter to the front half of the swivel using the M4x12 Pan Head screws. Attach the M4 Star Washers and M4 Hex Nuts to the screws and tighten the plate down with the #2 screwdriver and 9/32" open end wrench. Slide your device onto the T- notch Adapter plate to secure it to the swivel. (See Pictures 4)

- 3**

### For AMPs Devices with Inserts

Attach your AMPs device using the M4x10 Hex Head screws and M4 Star Washers. Align the holes on the device with the holes on the front half of the swivel. Slide the Star Washers onto the Hex Head screws. Insert the screws through the swivel and into your device only finger tight. Tighten down the device with the 9/32" open end wrench. Your device is now secure to the swivel. (See Pictures 5)

Picture 5

